



**DESCRIPTION**

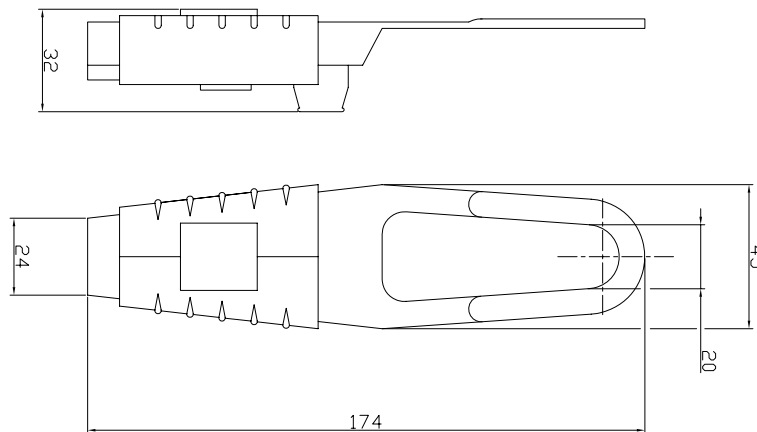
KL 05 is an important accessory for the professional installation of submersible pressure probes. In most cases submersible pressure probes are being installed on a self bearing hydrometric cable. In deeper wells, the length of the cable can reach hundreds of meters, so the proper anchoring of the cable becomes vitally important to ensure that the cable sheath is not damaged and the venting tube is intact. KL-05 spreads the anchoring load by uniformly clamping the cable along the 100 mm length with it's specially designed polyamide jaws making sure that the cable is safe.

**TECHNICAL SPECIFICATIONS**

PARAMETER	VALUE	
Material	Casing	stainless steel 1,4301
	Clamping mechanism	polyamide reinforced with glass fiber
Cable diameter	5.5 - 10.5 mm	
Bearing capacity	250 kg	
Weight	162 g	

**DIMENSIONS (mm)**

Length	174 mm
Width	45 mm
Depth	32 mm



Appearance, mounting kit contents and/or specifications are subject to change without prior notice. We are constantly working on further improvement of our products. Delivery is subject to standard terms of delivery. © 2020 Piezus