

**DESCRIPTION**

APZ 2422 economy line pressure transmitters feature up to three pressure ranges selectable by the user via ZCON 100 configurator tool, allowing customers to have reduced inventory of spare instruments. Based on a welded stainless steel silicon piezoresistive sensor, APZ 2422 is a great choice for the applications where elastomeric seal is not desirable.

**SPECIFICATIONS**

Ranges: 6 bar to 600 bar  
Number of ranges: up to 3, user-selectable via ZCON 100\*  
Pressure type: gauge  
Accuracy:  $\pm 0.5\%$ ,  $\pm 1\%$  FS of the highest chosen range  
Output: 4...20 mA / 2-wire  
Sensor: silicon piezoresistive  
Pressure port: G1/2"; G1/4"; 1/2" NPT; 1/4" NPT; M20x1.5; other.  
Media temperature: -40...+125 °C  
Ambient temperature: -40...+85 °C

**APPLICATIONS**

Hydraulics and pneumatics  
Pumps and compressors  
Industrial machinery  
Transportation  
HVAC/R

\* ZCON 100 configurator is sold separately and provides ZERO TRIM and RANGE SWITCHING features

Appearance, mounting kit contents and/or specifications are subject to change without prior notice. We are constantly working on further improvement of our products.  
Delivery is subject to standard terms of delivery.  
© 2022 Piezus

## TECHNICAL SPECIFICATIONS

### MEASURING RANGES

Pressure range, bar* Gauge	Overpressure, bar	Burst pressure, bar	Pressure range, bar* Gauge	Overpressure, bar	Burst pressure, bar
0...6.0	15	20	0...100	300	450
0...10	30	40	0...160	300	450
0...16	60	80	0...250	400	500
0...25	60	80	0...400	600	800
0...40	100	150	0...600	900	1200
0...60	150	200			

\* Transmitter can be calibrated on three (user-selectable via ZCON 100 configurator) pressure ranges. The lowest range should be at least 1/5 of the highest range.

### PERFORMANCE

Accuracy, % of span*	$\leq \pm 1$ (standard) / $\pm 0.5$ (optional)
Temperature effect (% of span / 10 °C)	$\leq \pm 0.3$
Compensated range	-25...+85 °C
Power supply effect	$\leq \pm 0.05\%$ of span / 10 V
Load resistance effect	$\leq \pm 0.05\%$ of span / kOhm
Long-term stability	$\leq \pm 0.3\%$ of span / year
Response time (10...90%)	$\leq 1$ ms

\* Accuracy includes non-linearity, hysteresis and non-repeatability.

### OPERATING CONDITIONS

Medium temperature (depends on seal)	-40...+125 °C
Ambient temperature	-40...+85 °C
Storage temperature	-40...+85 °C
Vibration resistance	10 g RMS, 20–2000 Hz
Shock resistance	100 g / 11 ms
Service life	$> 100 \times 10^6$ cycles

### MECHANICAL SPECIFICATIONS

Pressure port material	stainless steel 304 (1.4301)
Housing material	stainless steel 304 (1.4301)
Seal	welded sensor*
Diaphragm	stainless steel 316L (1.4435)
Wetted parts	Diaphragm, pressure port, pressure port seal*
Pressure port	M20x1.5 EN 837; G1/2" EN 837; G1/4" DIN 3852; G1/4" EN 837; 1/2" NPT; 1/4" NPT;

Electrical connection	Ingress protection	Cross section	Cable diameter
DIN 43650A (4 pin)	IP65	1.5 mm <sup>2</sup>	6...8 mm

\* G1/4" DIN 3852 pressure port seal: FKM (-25...+135 °C) for P < 160 bar, NBR (-25...+100 °C) for P ≥ 160 bar

### ELECTRICAL SPECIFICATIONS

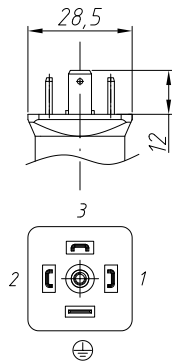
Output signal	Power supply, U <sub>s</sub>	Load resistance, R	Power consumption
4...20 mA / 2-wire	8...32 V	$\leq [(U_s - 8 \text{ V}) / 0.02 \text{ A}] \text{ Ohm}^*$	< 26 mA

### ELECTRICAL CONNECTIONS / PIN ASSIGNMENT

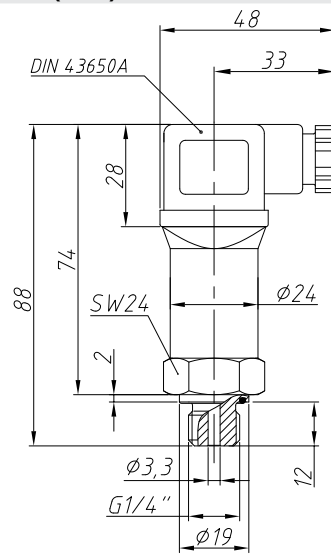
Circuits	DIN 43650A
power +	1
power -	2
calibration	3 (left disconnected)
shield	GND

## ELECTRICAL CONNECTIONS, DIMENSIONS (mm)

DIN 43650A



## DIMENSIONS (mm)



## PRESSURE PORTS, DIMENSIONS (mm)

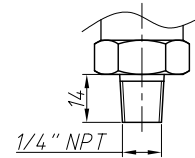
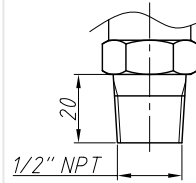
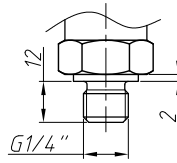
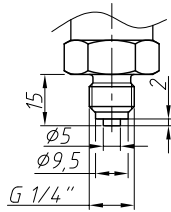
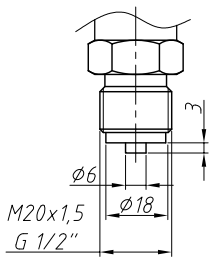
M20x1.5; G1/2" EN 837

G1/4" EN 837

G1/4" DIN 3852

1/2" NPT

1/4" NPT



ORDERING CODE										
APZ 2422		-X	-X	-XXXX	-X	-XX	-X	-XXX	-X	-XX
<b>MEASUREMENT TYPE</b>										
Gauge		G								
Vacuum, LRL = -1 bar		V								
<b>UNIT OF MEASUREMENT</b>										
		bar	B							
		MPa	M							
Other (specify when ordering)		X								
<b>UPPER RANGE LIMIT (URL)</b>										
bar		MPa								
6.0	6000	0.60	0600							
10	1001	1.0	1000							
16	1601	1.6	1600							
25	2501	2.5	2500							
40	4001	4.0	4000							
60	6001	6.0	6000							
100	1002	10	1001							
160	1602	16	1601							
250	2502	25	2501							
400	4002	40	4001							
600	6002	60	6001							
Other	XXXX	Other	XXXX							
Dual range	XXXX-XXXX*	Dual range	XXXX-XXXX*							
Triple range	XXXX-XXXX-XXXX*	Triple range	XXXX-XXXX-XXXX*							
<b>ACCURACY</b>										
		1% (standard)	E							
		0.5% (optional)	D							
Other (specify when ordering)		X								
<b>ELECTRICAL CONNECTION</b>										
		DIN 43650A	10							
Other (specify when ordering)		XX								
<b>OUTPUT SIGNAL</b>										
		4...20 mA / 2-wire	A							
Other (specify when ordering)		X								
<b>PRESSURE PORT</b>										
		M20x1.5 EN 837	201							
		G1/2" EN 837	721							
		G1/4" DIN 3852	740							
		G1/4" EN 837	741							
		1/2" NPT	820							
		1/4" NPT	840							
Other (specify when ordering)		XXX								

## ORDERING CODE (CONTINUED)

APZ 2422	-X	-X	-XXXX	-X	-XX	-X	-XXX	-X	-XX
<b>SEALS</b>									
								Welded sensor* (no seal -40...+125 °C)	W
								Other (specify when ordering)	X
<b>VERSION</b>									
								Standard	00
								Zero trim (requires ZCON 100 configurator)	01
								Dual range, zero trim (requires ZCON 100 configurator)	02
								Triple range, zero trim (requires ZCON 100 configurator)	03
								Other (specify when ordering)	XX

\* Ranges for triple range and dual-range version can be chosen from single range options. The widest range comes first, followed by the next and the smallest one. For example, the range code for 6, 4 and 2.5 bar is 6000-4000-2500.

\*\* G1/4" DIN 3852 ressure port seal: FKM (-25...+135 °C) for P < 160 bar, NBR (-25...+100 °C) for P ≥ 160 bar.

Example: APZ 2422-G-B-6000-4000-2500-D-10-A-201-W-03

## ACCESSORIES

				
DZ 10 Pressure snubber	ZCON 100 Zero trim and range selection device	ANZ 200 Plug-in display for transmitters with 4-20 mA output	PZ 1024 Power supply unit	