

**DESCRIPTION**

APZ 2410 economy line pressure transmitters feature up to two pressure ranges selectable by the user via ZCON 100 configurator tool, allowing customers to have a reduced inventory of spare instruments. Based on a monolithic ceramic measuring cell, highly resistive to abrasive and aggressive* media, APZ 2410 is a good fit for the applications where hydraulic shocks (water hammer) are not present. APZ 2410 features improved overpressure capability compared to APZ 2412, which in turn offers improved accuracy.

SPECIFICATIONS

Ranges: 1 bar to 160 bar
Number of ranges: up to 2, user-selectable via ZCON 100**
Pressure type: gauge
Accuracy: $\pm 1\%$ FS of the highest chosen range
Output: 4...20 mA / 2-wire
Sensor: ceramic thick film
Pressure port: G1/2"; G1/4"; 1/2" NPT; 1/4" NPT; M20x1.5; other.
Media temperature: -25...+135 °C
Ambient temperature: -40...+85 °C
Improved overpressure capability compared to APZ 2412

APPLICATIONS

Pneumatics

Hydraulics***

Transportation

* Please consult the manufacturer for particular media compatibility

** ZCON 100 configurator is sold separately and provides ZERO TRIM and RANGE SWITCHING features

*** Applications with absence of excessive hydraulic shocks

Appearance, mounting kit contents and/or specifications are subject to change without prior notice. We are constantly working on further improvement of our products.
Delivery is subject to standard terms of delivery.
© 2022 Piezus

TECHNICAL SPECIFICATIONS

MEASURING RANGES

Pressure range, bar* Gauge	Overpressure, bar	Burst pressure, bar	Pressure range, bar Gauge	Overpressure, bar	Burst pressure, bar
0...1.0	4.0	5.0	0...16	100	120
0...1.6	10	12	0...25	100	120
0...2.5	10	12	0...40	200	250
0...4.0	20	25	0...60	200	250
0...6.0	20	25	0...100	400	500
0...10	40	50	0...160	800	880

* Transmitter can be calibrated on two adjacent (user-selectable via ZCON 100 configurator) pressure ranges.

PERFORMANCE

Accuracy, % of span*	≤ ±1
Temperature effect (% of span / 10 °C)	≤ ±0.3
Compensated range	-25...+85 °C
Power supply effect	≤ ±0.05% of span / 10 V
Load resistance effect	≤ ±0.05% of span / kOhm
Long-term stability	≤ ±0.3% of span / year
Response time (10...90%)	≤ 1 ms

* Accuracy includes non-linearity, hysteresis and non-repeatability.

OPERATING CONDITIONS

Medium temperature (depends on seal)	-25...+135 °C
Ambient temperature	-40...+85 °C
Storage temperature	-40...+85 °C
Vibration resistance	10 g RMS, 20–2000 Hz
Shock resistance	100 g / 11 ms
Service life	> 100 x 10 ⁶ cycles

MECHANICAL SPECIFICATIONS

Pressure port material	stainless steel 304 (1.4301)		
Housing material	stainless steel 304 (1.4301)		
Seal	FKM (-25...+135 °C)		
Diaphragm	ceramics Al ₂ O ₃ 96%		
Wetted parts	Diaphragm, pressure port, seal		
Pressure port	M20x1.5 EN 837; G1/2" EN 837; G1/4" DIN 3852; G1/4" EN 837; 1/4" NPT; 1/2" NPT		
Electrical connection	Ingress protection	Cross section	Cable diameter
DIN 43650A (4 pin)	IP65	1.5 mm ²	6...8 mm

ELECTRICAL SPECIFICATIONS

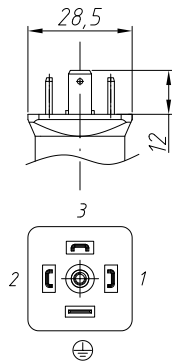
Output signal	Power supply, U _s	Load resistance, R	Power consumption
4...20 mA / 2-wire	8...32 V	≤ [(U _s - 8 V) / 0.02 A] Ohm*	< 26 mA

ELECTRICAL CONNECTIONS / PIN ASSIGNMENT

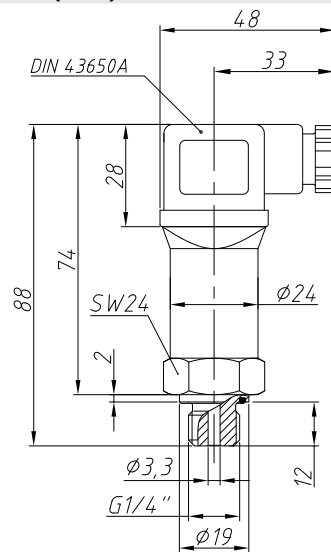
Circuits	DIN 43650A
power +	1
power -	2
calibration	3 (left disconnected)
shield	GND

ELECTRICAL CONNECTIONS, DIMENSIONS (mm)

DIN 43650A



DIMENSIONS (mm)



PRESSURE PORTS, DIMENSIONS (mm)

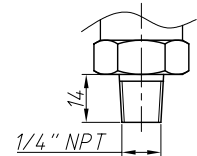
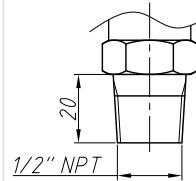
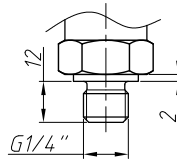
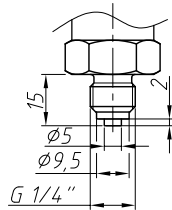
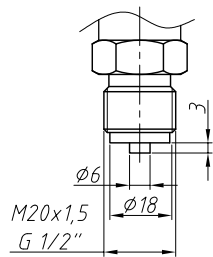
M20x1.5; G1/2" EN 837

G1/4" EN 837

G1/4" DIN 3852

1/2" NPT

1/4" NPT



ORDERING CODE										
APZ 2410	-X	-X	-XXXX	-X	-XX	-X	-XXX	-X	-XX	
MEASUREMENT TYPE										
Gauge	G									
UNIT OF MEASUREMENT										
	bar	B								
	MPa	M								
	Other (specify when ordering)	X								
UPPER RANGE LIMIT (URL)										
	bar		MPa							
1.0	1000	0.10	0100							
1.6	1600	0.16	0160							
2.5	2500	0.25	0250							
4.0	4000	0.40	0400							
6.0	6000	0.60	0600							
10	1001	1.0	1000							
16	1601	1.6	1600							
25	2501	2.5	2500							
40	4001	4.0	4000							
60	6001	6.0	6000							
100	1002	10	1001							
160	1602	16	1601							
Other	XXXX	Other	XXXX							
Dual range	XXXX-XXXX*	Dual range	XXXX-XXXX*							
ACCURACY										
		1% (standard)	E							
		Other (specify when ordering)	X							
ELECTRICAL CONNECTION										
		DIN 43650A	10							
		Other (specify when ordering)	XX							
OUTPUT SIGNAL										
		4...20 mA / 2-wire	A							
		Other (specify when ordering)	X							
PRESSURE PORT										
		M20x1.5 EN 837	201							
		G1/4" DIN 3852	740							
		G1/4" EN 837	741							
		G1/2" EN 837	721							
		1/4" NPT	840							
		1/2" NPT	820							
		Other (specify when ordering)	XXX							

ORDERING CODE (CONTINUED)

	APZ 2410	-X	-X	-XXXX	-X	-XX	-X	-XXX	-X	-XX
SEALS										
								FKM (-25...+135 °C)	F	
								Other (specify when ordering)	X	
VERSION										
								Standard		00
								Zero trim (requires ZCON 100 configurator)		01
								Dual range, zero trim (requires ZCON 100 configurator)		02
								Other (specify when ordering)		XX

* Ranges for dual-range version can be chosen from adjacent single range options. The widest range comes first, followed by the next in the list. For example, the range code for 6 and 4 bar is 6000-4000.

Example: APZ 2410-G-B-6000-4000-E-10-A-201-F-02

ACCESSORIES

				
DZ 10 Pressure snubber	ZCON 100 Zero trim and range selection device	ANZ 200 Plug-in display for transmitters with 4-20 mA output	PZ 1024 Power supply unit	